

# La Follia

Stimme für  
Es und Bb-Instrumente

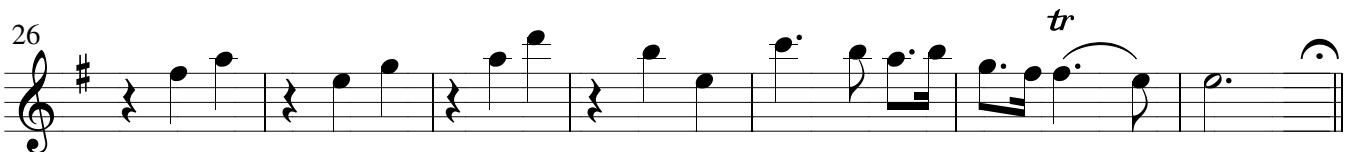
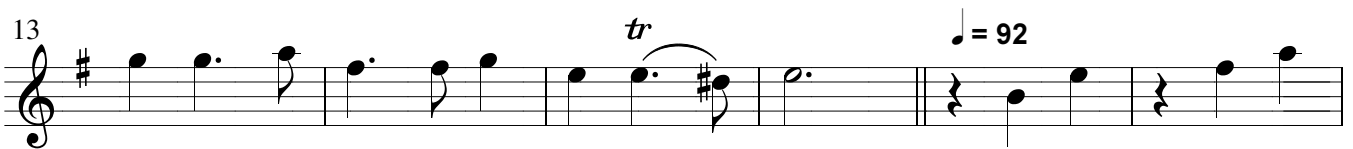
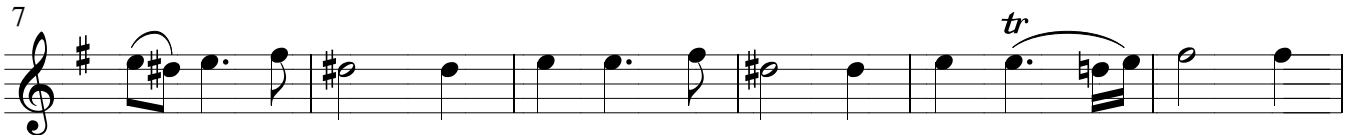
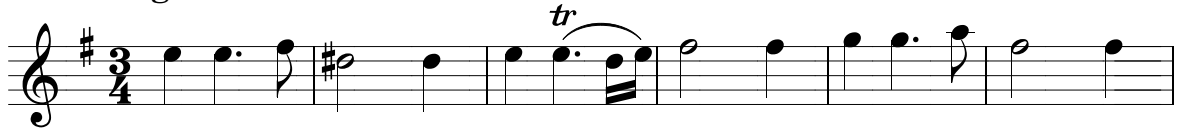
für Saxophon und Klavier

Arcangelo Corelli

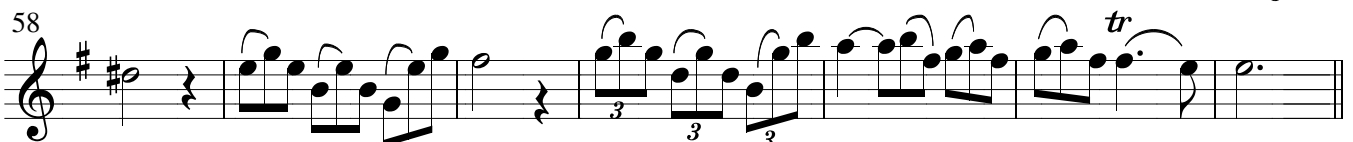
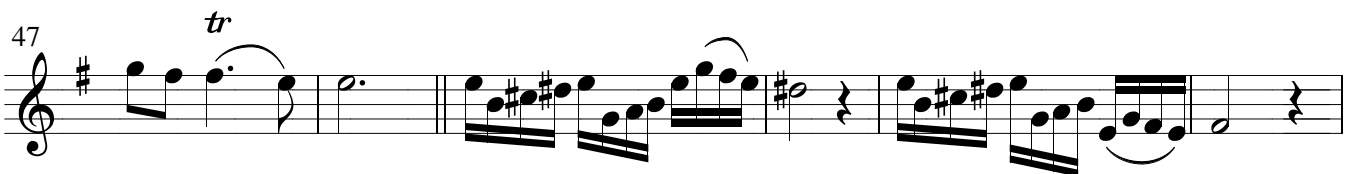
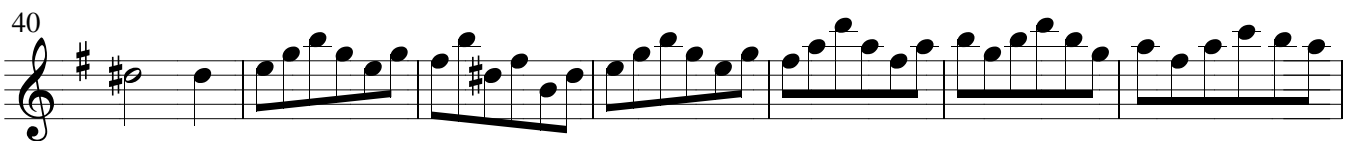
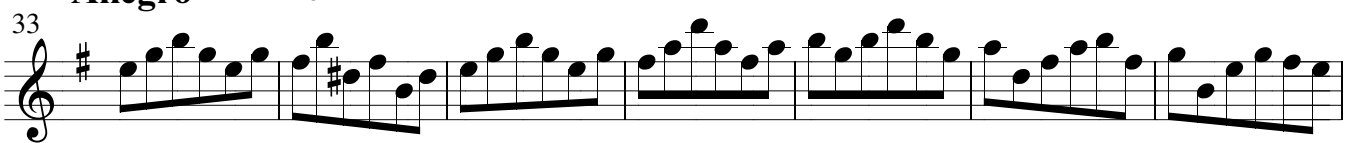
(1653 - 1713)

Bearbeitung: Manfred Wordtmann

Adagio ♩ = 72



Allegro ♩ = 120



65

71

77

81

86

91

97  $\text{♩} = 126$

100

103

106

109

113

121

*tr*

*tr*

The image shows a page of musical notation for Corelli's 'La Follia'. It consists of ten staves of music in treble clef with a key signature of one sharp (F#). The measures are numbered 65 through 121. The music features a variety of rhythmic patterns, including eighth and sixteenth notes, and rests. Notable features include triplets of eighth notes in measures 77-80 and a tempo marking of quarter note = 126 in measure 97. Trills are indicated by 'tr' above notes in measures 80 and 91. The notation includes slurs, accents, and dynamic markings.

129  $\text{♩} = 84$

133

137

141

**Vivace**  $\text{♩} = 132$

145

149

153

157 *tr*

**Allegro**  $\text{♩} = \text{♩} = 88$

161

169

**Andante** ♩ = 80

178

**Allegro** ♩ = 100

184

189

194

♩ = ♩ = 100

196

199

**Adagio** ♩ = 86

202

210

218

♩ = 88

226

**Allegro** ♩ = 132

Musical score for 'Piper Prints' by Corelli, measures 234-290. The score is written in treble clef with a key signature of one sharp (F#). The tempo is marked 'Allegro' with a metronome marking of ♩ = 132. The music consists of ten staves of notation. Measures 234-265 feature a melodic line with eighth and sixteenth notes, often starting with a grace note. Measures 266-281 show a more rhythmic section with sixteenth-note patterns. Measures 282-290 return to a melodic style, ending with a trill in the final measure.

*Piper Prints*

♩ = 120

298

302

306

♩ = 144

314

317

320

323

326

♩ = 144

330

337

344